



## DESIGN LIFT AND SLIDE WINDOWS

**HST SPAZIO DESIGN**

Can a single window combine aesthetic beauty and effective heat insulation? The answer to this question is the HST Spazio Design lift and slide window, our lift and slide model with profile visibly reduced by 50% to offer more light and a more modern design.



More light



Exclusive design



Excellent heat and sound insulation

**THERMAL TRANSMITTANCE**MEDIUM NODE (Uf) **1,30 W/m<sup>2</sup> K****TECHNICAL CHARACTERISTICS**

- Profile visibility reduced by 50% for more light and a modern feel
- Galvanised steel reinforcements with a thickness of notable dimensions
- Certified Double glazing featuring high-level heat and sound insulation with Warm Edge duct
- Can fit triple glazing up to 44 mm thick
- Wide range of colours and finishes
- Product 100% Made in Italy

## VERIFICATIONS to which the system has been subjected

DESIGN LIFT AND SLIDE WINDOWS

## HST SPAZIO DESIGN

### VERIFICATION

Verification of eligibility in accordance with RAL-GZ-716-1

Thermal insulation verification

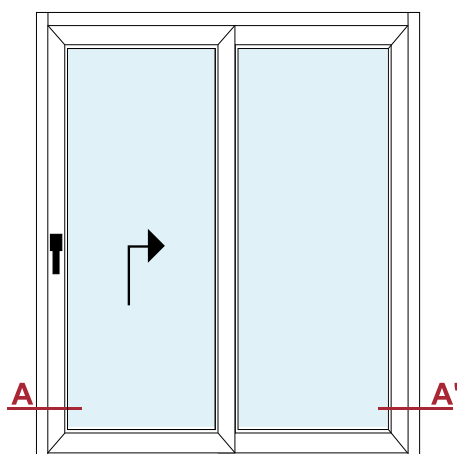
### VERIFICATION RESULT

Air permeability according to **DIN EN 12207: class 4**

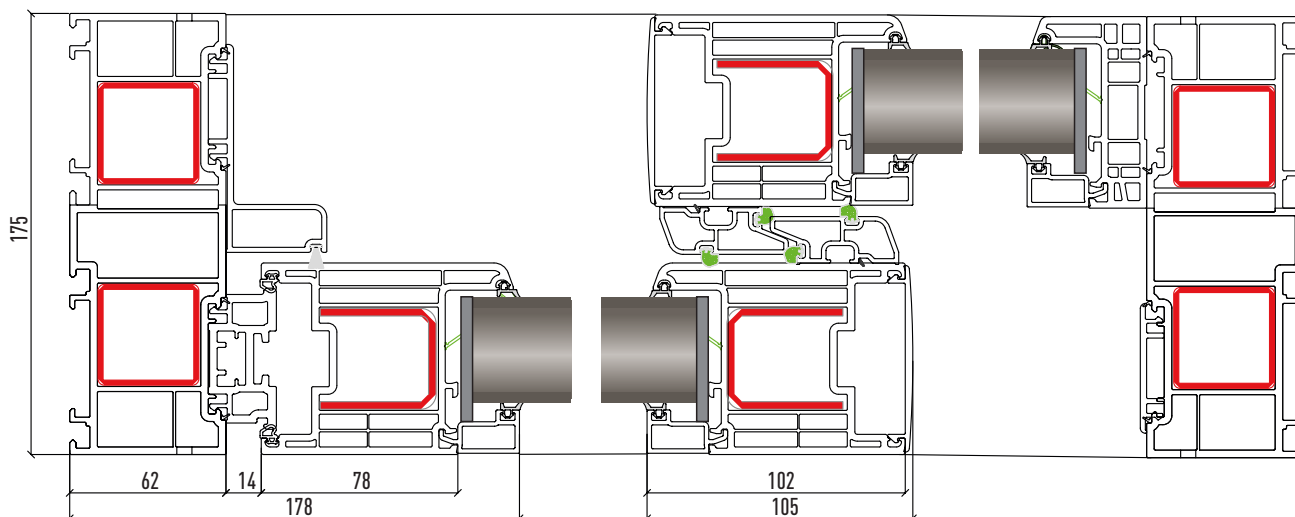
Resistance to driving rain compliant with **DIN EN 12208: class 9A**

Thermal transmittance coefficient  
Average  $U_f$  value = 1.30 W/m<sup>2</sup>K

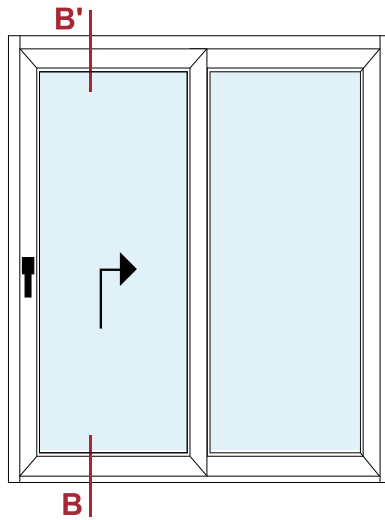
## NODES



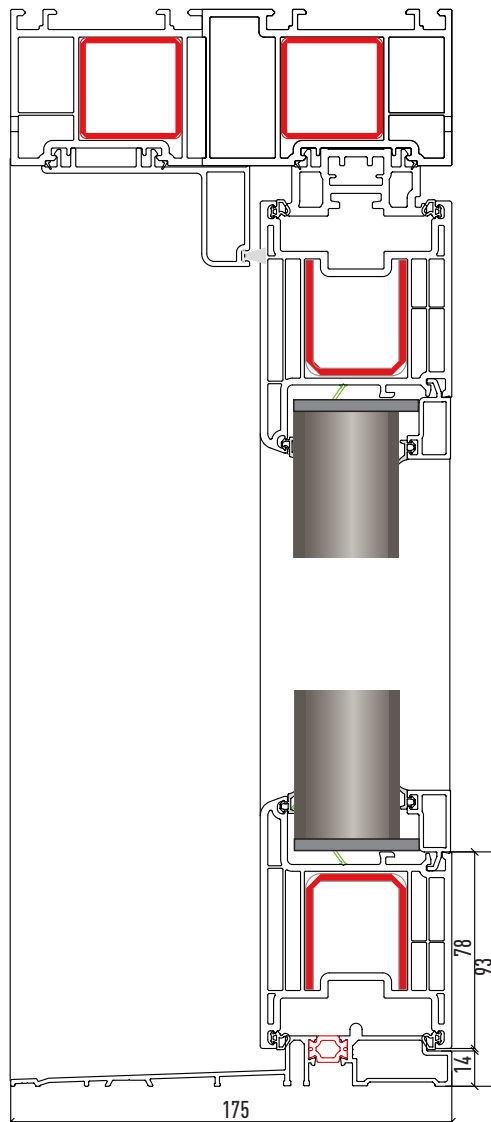
Section A-A'



1:3 scale



**Section B-B'**



**BATCH COLOURS**



**Bianco 3**

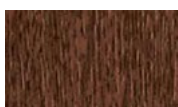


**Avorio 096**

**TYPE A COATING**



**Ciliegio 110**



**Noce 154**



**Bianco classico  
100**



**Crema 96**



**Cedro sbiancato  
694**



**Grigio Cedro 143**



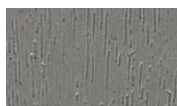
**Grigio 004**



**Verde scuro 006**



**Grigio Antracite  
liscio 048**



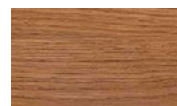
**Grigio Quarzo  
068**



**Grigio Antracite  
072**



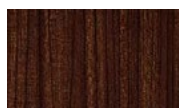
**Blu Acciaio 079**



**Winchester 109**



**Bronzo scuro  
138**



**Macore 144**



**Alluminio Grigio  
184**



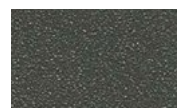
**Douglas 402**



**Grigio Basalto  
liscio 628**



**Grigio liscio 651**



**Alux DB703 653**



**Noce Sorrento  
Balsamico 663**



**Grigio Basalto  
667**



**Grigio Antracite  
Stylo 686**



**Nero Grafite  
Stylo 690**



**Grigio Chiaro  
907**



**Alluminio liscio  
911**



**Alluminio Bianco  
925**



**Marrone  
cioccolato 008**

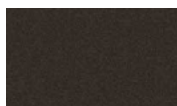
**TYPE B COATING**



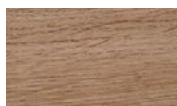
**Rosso scuro  
027**



**Nero Grafite  
Matt 043**



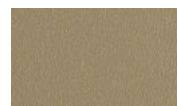
**Grigio Ombra  
Matt 044**



**Woodec Turner  
Oak Matt 047**



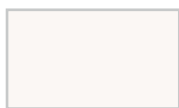
**Grigio Antracite  
Matt 103**



**Bronzo  
spazzolato 119**



**Verde Muschio  
134**



**Bianco Matt 358**



**Woodec Turner  
Oak Toffee 1342**



**Woodec Turner  
Oak Walnut 1346**



**Woodec Sheffield  
Oak Concrete 1036**



**Woodec Sheffield  
Oak Alpine 1042**