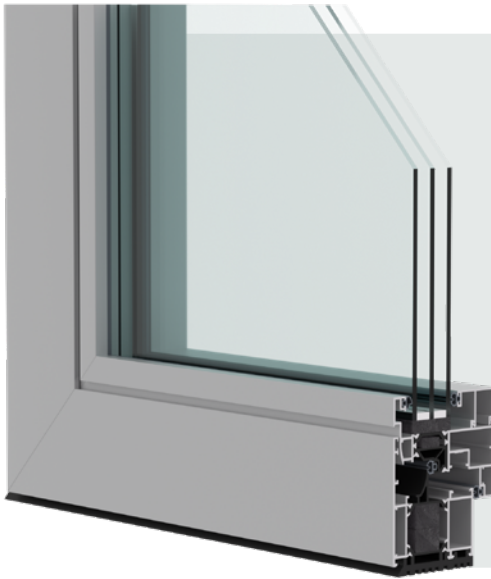


TECHNICAL DATA SHEET

Windows > Windows and french windows in aluminum

DAUNIA
INFISSI ITALIANI

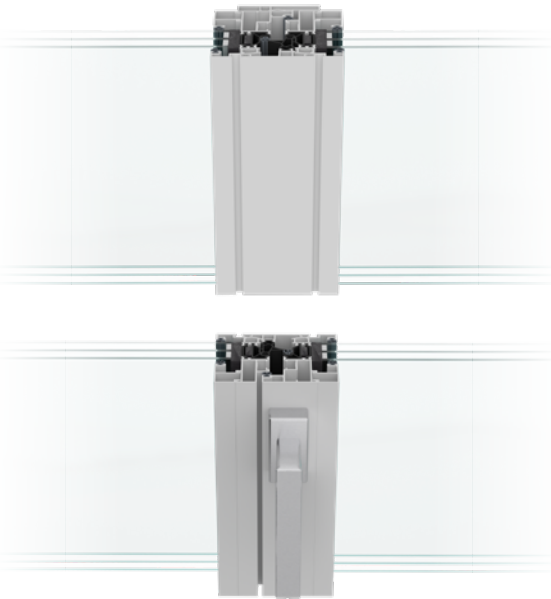


SERIES

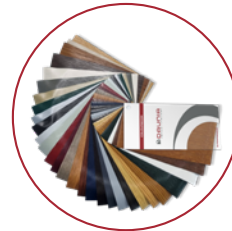
70 SOFT VISION

The 70 Soft Vision series was created to meet the needs of contemporary architecture, which is increasingly focused on aesthetic minimalism and a stronger connection with outdoor spaces. Thanks to its slim profiles, this series allows for large glazed surfaces that let in more natural light, significantly enhancing living comfort. Its thermal performance is highly efficient, with low transmittance ensuring excellent thermal insulation.

The 70 Soft Vision series is the perfect synthesis of design, comfort and innovation.

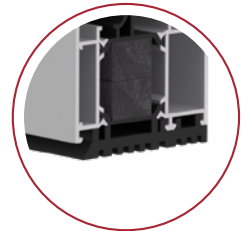


Central node (standard)



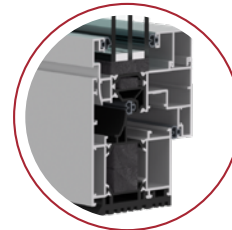
Wide range of colours:

This means you can always find the best solution for your home



Underframe gasket:

Covers water drainage holes at the front



High Isolation profiles:

With polyamide and thermal foam inserts for excellent thermal resistance

THERMAL TRANSMITTANCE

NODE (Uf)	1,70 W/m ² K
GLASS (Ug)	1,00 W/m ² K
COMBINATION (Uw)	1,40 W/m ² K

Uw up to 1,00 W/m² K (with appropriate glazing)

Uw: thermal values of the individual frame components (frame and glazing)

TECHNICAL SPECIFICATIONS

- Construction depth of 70 mm
- Double rabbet seal
- Certified Double glazing featuring high-level heat and sound insulation with Warm Edge duct + Gas Argon 90%
- Glass-casement bonding with bicomponent for structural and acoustic improvement
- Possibility to use double glazing up to 60 mm thick
- Roto NX, burglar-proof metal hardware with bottom hung casement as standard for the correct ventilation of the room
- Product 100% Made in Italy and 100% recyclable



VERIFICATIONS
to which the system has been subjected

SERIES
**70 SOFT
VISION**

VERIFICATION	VERIFICATION RESULT	OBSERVATIONS
Summary of test report October 25, 2023	Air permeability according to EN 12207 - UNI EN 120207: class 4 Resistance to driving rain compliant with EN 1227 - UNI EN 12208: E1500 Wind resistance according to EN 12211 - UNI EN 12210: class C5	Verification based on different frame and sash combinations
Suitability verification for ventilation window	Air permeability according to UNI EN 12207: class 4 Resistance to driving rain compliant with DIN EN 12208: class 9A	
Sound insulation verification	UNE-EN ISO 10140-2: 2011	Verification based on different frame - sash and glass combinations
Thermal insulation verification	Thermal transmittance coefficient (U-value) $U_f = 1,70 \text{ W/m}^2\text{K}$	Verification carried out for combination 6635/667120

Thermal insulation for Window type:

1230 x 1480 mm - Frame/Sash node value:

$U_f = 1,70 \text{ W/m}^2\text{K}$

- with double glazing and Warm Edge duct

$U_g = 1,00 \text{ W/m}^2\text{K}$ - $\Psi = 0,049$

Thermal insulation in class A with $U_w = 1,40 \text{ W/m}^2\text{K}$

- with double glazing and Warm Edge duct

$U_g = 0,50 \text{ W/m}^2\text{K}$ - $\Psi = 0,044$

(Maximum thickness of the glass is 60 mm)

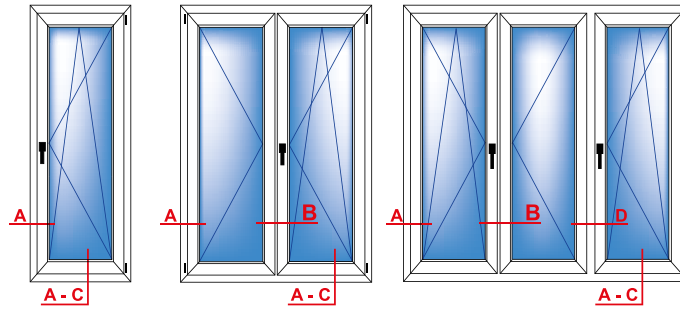
Thermal insulation in class A with $U_w = 1,00 \text{ W/m}^2\text{K}$

Hardware System Specification

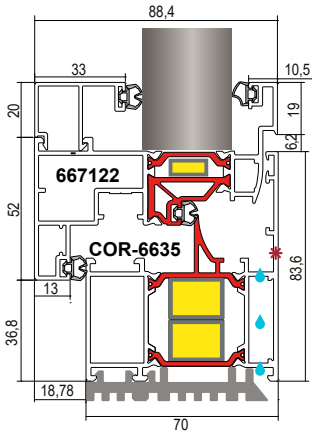
- Standard Roto NX hardware, load capacity 150 kg
- Burglar-proof class WK1, with false operation device and micro-ventilation
- Special RotoSil Nano surface treatment according to the Class 4 based on the requirement of DIN EN 13126/8
- Fastenings screwed onto reinforcement with the possibility of increasing the degree of break-in

On request

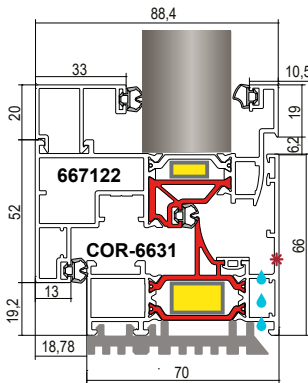
- Fully concealed hardware
- Hardware with optional systems with resistance class WK2 - WK3 (WK3 not certifiable)



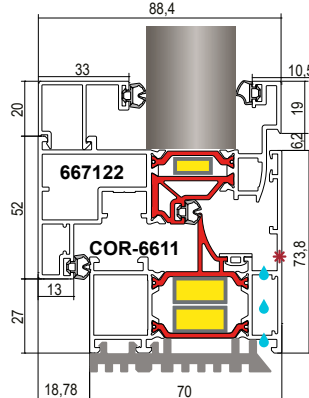
**Sezione A - C
Frame - Sash**



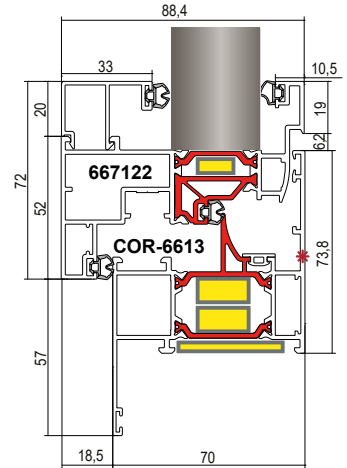
Direct Condensate Drainage
* Front Drainage H=42 mm (on request)



Direct Condensate Drainage
* Front Drainage H=25 mm (on request)

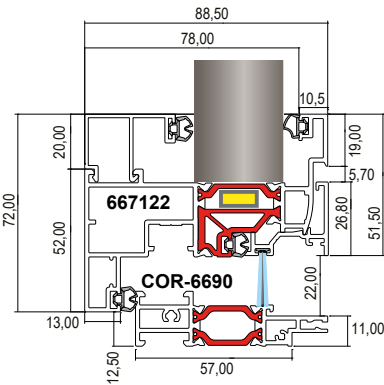


Direct Condensate Drainage
* Front Drainage H=33 mm (on request)

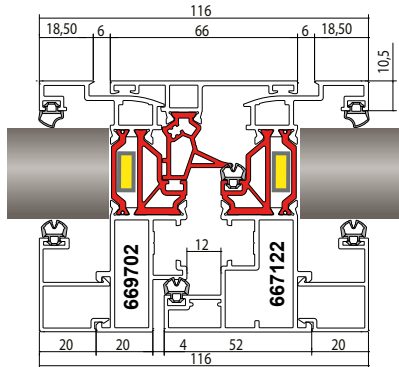


* Front Drainage H=33 mm (on request)

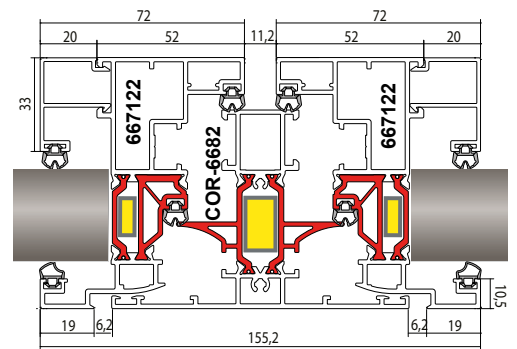
**Section C
Low threshold - Sash**



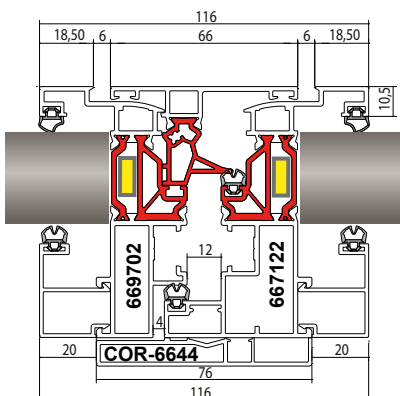
**Section B
Central node 2 sashes (standard)**



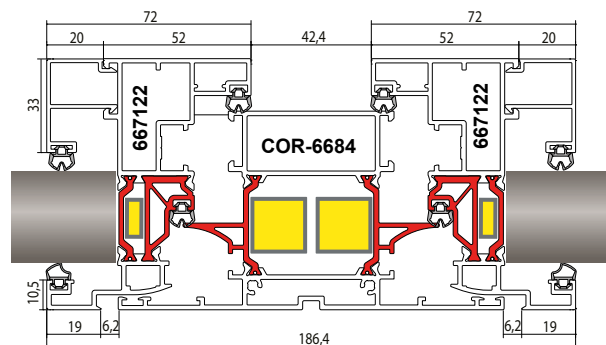
**Section D
Sash node - Transom - Sash
Compatible only with concealed hinges**



**Section B
Central node 2 sashes with cup (on request)**

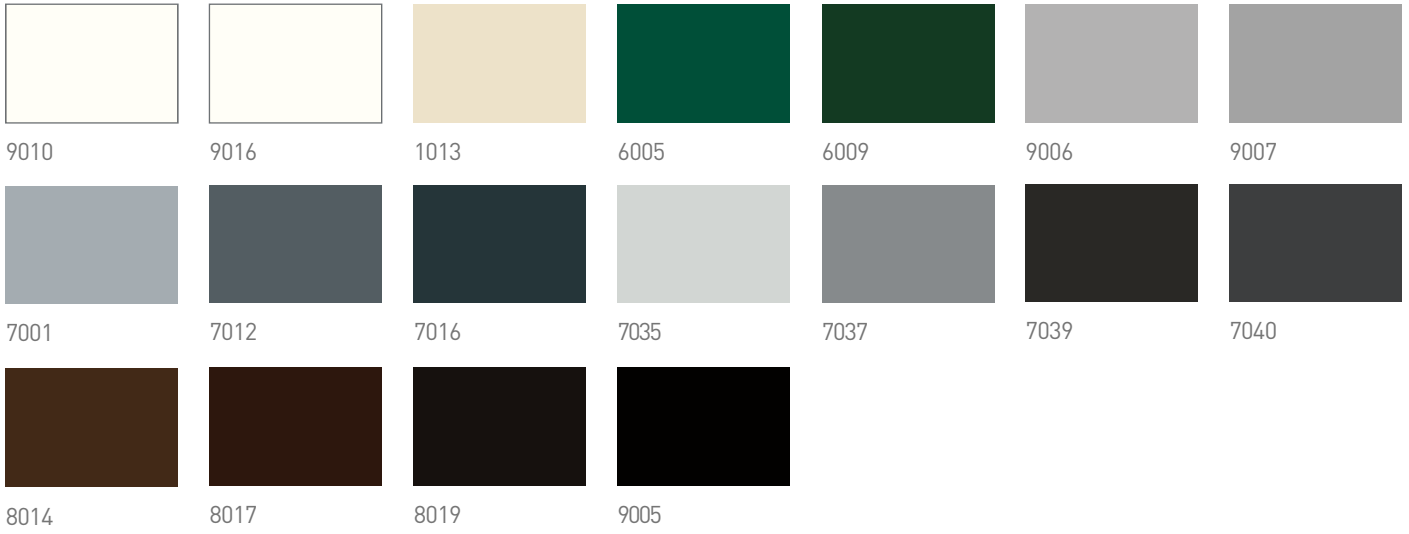


**Section D
Sash node - Transom - Sash**

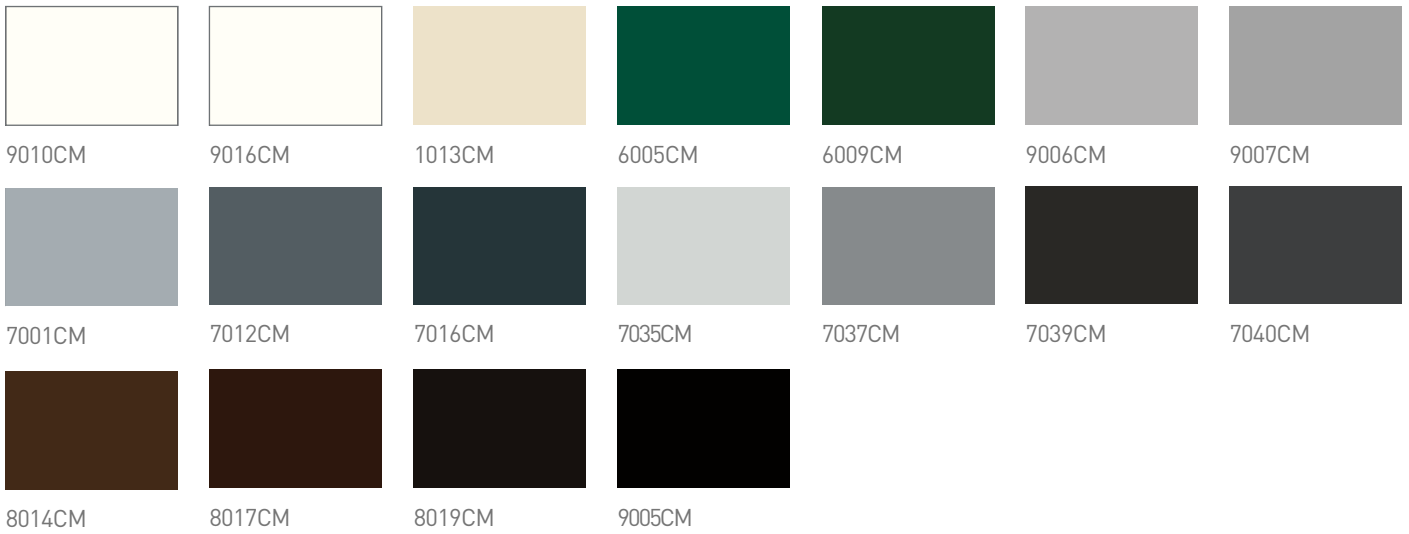


1:3 Scale

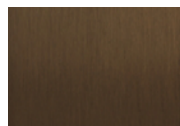
GLOSSY RAL



MATTE RAL



ANODIZED



Bronzo liscio 3L



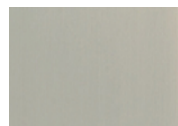
Bronzo Spazzolato 3GR



Inox Spazzolato 17GR



Ivory Spazzolato 22GR



Naturale Spazzolato 1G



Nero Opaco 10M

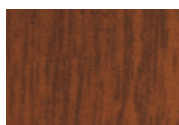
WOOD EFFECT



Castagno Texture CE802TX



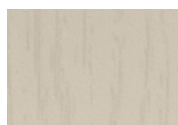
Ciliegio Liscio CE303L



Ciliegio Texture CA802TX



Embero Texture EM802TX



Legno Bianco MB704TX



Noce Liscio N0401L



Noce Texture N0802TX



Pino Liscio PI303L



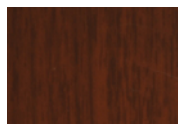
Pino Texture PI302TX



Quercia Liscia R0303L



Quercia Texture R0302TX

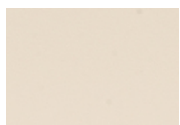


Sapelli Liscio SA401L



Sapelli Texture SA802TX

TEXTURED



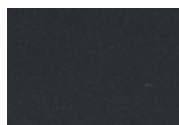
PE1013TD



PE1015TD



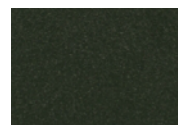
PE5003TD



PE5008TD



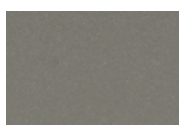
PE6005TD



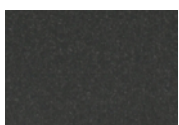
PE6009TD



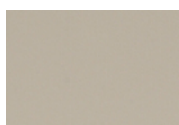
PE7001TD



PE7012TD



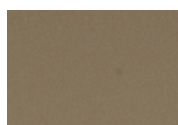
PE7016TD



PE7035TD



PE7037TD



PE7039TD



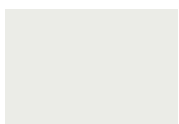
PE8014TD



PE8017TD



PE8019TD



PE9003TD



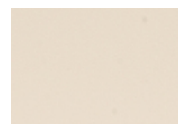
PE9005TD



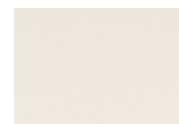
PE9006TD



PE9007TD

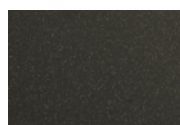


PE9010TD

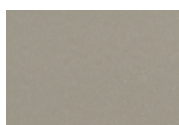


PE9016TD

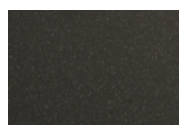
MARbled



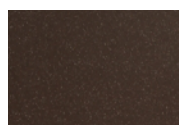
Grigio Maculato M7024NV



Grigio Metallizzato 9006SP



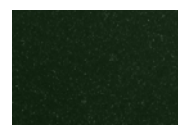
Grigio Texture TX7022DE



Grigio Scuro M8016RH



Verde Maculato M6005NV



Verde Maculato M6009DC