



SERIES

**D120MAX
FRONT DOOR**

Security, aesthetics, and architecture, noise and temperature isolation: our entrance is not just a simple door, it is the very best entry into your world. Our front doors are robust, modern and offer excellent insulation together with the utmost possibility for customisation. Thanks to the wide variety of colour choices and finishes, we are able to make products that fit seamlessly with architectural needs.



Robustness and resistance:
Resists thermal and mechanical stress.



Optimised heat insulation:
Constant indoor temperatures with the perfect living climate for all seasons.



Certified quality guaranteed:
A product guaranteed by stringent quality controls throughout the production process.

THERMAL TRANSMITTANCE

NODE (Uf)	1,35 W/m ² K
GLASS (Ug)	1,10 W/m ² K
COMBINATION (Uw)	1,26 W/m ² K

Uw up to **0,86 W/m² K** (with appropriate glazing)
Uw: thermal values of the individual frame components (frame and glazing)

TECHNICAL CHARACTERISTICS

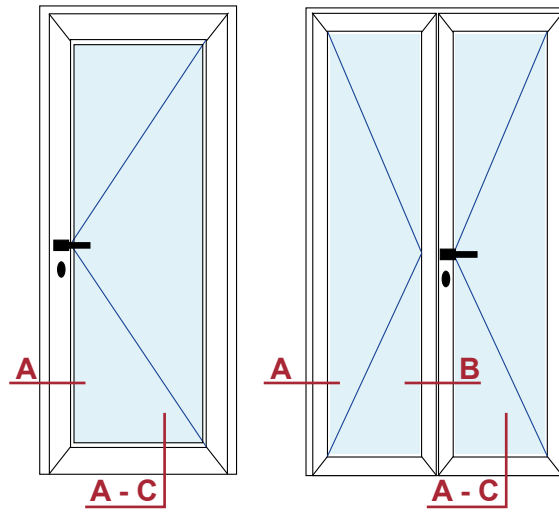
- Galvanised steel reinforcements with a thickness of notable dimensions
- Can fit triple glazing up to 60 mm thick
- Roto Door security hardware
- Wide choice of standard locks, multiple closure, electrical
- Exposed hinge with three-dimensional adjustment and high load-bearing capacity
- Wide range of finishes
- Product 100% Made in Italy



VERIFICATIONS
to which the system has been subjected

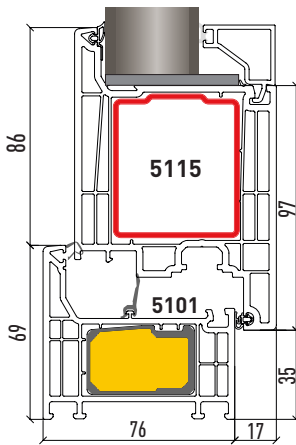
SERIES
D120MAX
FRONT DOOR

VERIFICATION	VERIFICATION RESULT	OBSERVATIONS
Suitability verification in accordance with RAL-GZ-716-1 for fixtures	Air permeability according to DIN EN 12207: class 4 (1 sash) Air permeability according to DIN EN 12207: class 4 (2 sashes) Resistance to driving rain compliant with DIN EN 12208: class 7 (1 sash) Resistance to driving rain compliant with DIN EN 12208: class 5A (2 sashes) Wind resistance according to DIN EN 12210: class C1 (1 sash) Wind resistance according to DIN EN 12210: class C2/B2 (2 sashes)	Verification conducted on inward-opening entrance

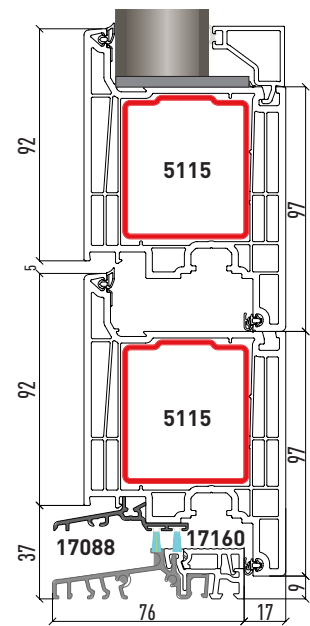
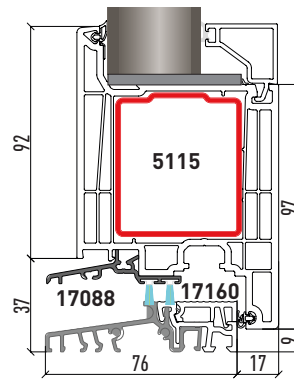


Section A - C

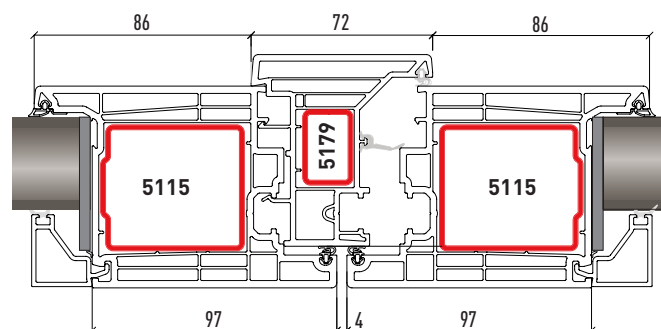
Section A



Section A - C



Section B



BATCH COLOURS



Bianco 3

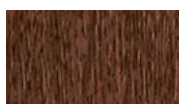


Avorio 096

TYPE A COATING



Ciliegio 110



Noce 154



Bianco classico 100



Crema 96



Cedro sbiancato 694



Grigio Cedro 143



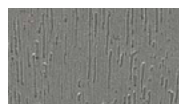
Grigio 004



Verde scuro 006



Grigio Antracite liscio 048



Grigio Quarzo 068



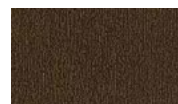
Grigio Antracite 072



Blu Acciaio 079



Winchester 109



Bronzo scuro 138



Macore 144



Alluminio Grigio 184



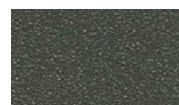
Douglas 402



Grigio Basalto liscio 628



Grigio liscio 651



Alux DB703 653



Noce Sorrento Balsamico 663



Grigio Basalto 667



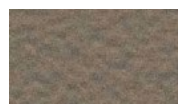
Grigio Antracite Stylo 686



Nero Grafite Stylo 690



Grigio Chiaro 907



Alluminio liscio 911



Alluminio Bianco 925



Marrone cioccolato 008

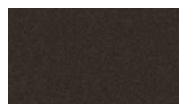
TYPE B COATING



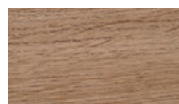
Rosso scuro 027



Nero Grafite Matt 043



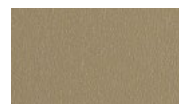
Grigio Ombra Matt 044



Woodec Turner Oak Matt 047



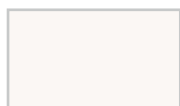
Grigio Antracite Matt 103



Bronzo spazzolato 119



Verde Muschio 134



Bianco Matt 358



Woodec Turner Oak Toffee 1342



Woodec Turner Oak Walnut 1346



Woodec Sheffield Oak Concrete 1036



Woodec Sheffield Oak Alpine 1042